

Release and Upgrade Note for Image2Punch Pro version 6.0.0

I am happy to let all the current and new users of Image2Punch that the 6th version of Image2Punch Pro is released in November 2015. In order to make the installation process as smooth as possible, I would like to point out a few things before and during the installation process. For all customer who purchase Image2Punch Pro version 5.4.0 and above will be entitle for free upgrade.

Current customers who bought Image2Punch Pro prior to version 5.4.0 will be entitled to get up to 25%. Please contact me immediately.

Backup all current data

For those who are upgrading Image2Punch from older version, I recommend you to save all current tooling database into a file by using export feature. You may also want to export other important information such as material database and Template database. This is to ensure that you will not lose the database in the case the older version (i.e. version 2.2.0) is not compatible to this latest version.

In the case there is a problem with the tooling database, please notify me and give me some description so i can reproduce the error in order to solve the problem.

Software Limitation and Solution

First of all, I developed Image2Punch in 2005 in order to enable me to generate an automatic perforated pattern based on an image. At the time I developed the application, the purpose of Image2Punch was only to generate a single pattern for an image. Thus, a current software development with 32bit system had been chosen as the 64bit system was not popular at that time. However, after almost 10 years from the initial development, some users want to generate a very large pattern that can be used as building fascia which contain over a millions holes.

Because of this, Image2Punch has reached its limitation to generate a very large perforated pattern to accommodate this. The only solution is to re-create and re-develop Image2Punch by using a 64bit software programming system. Due to the demand for this kind of software is very unique and I do not have any plan to re-develop the software, I will try my best to give some work around way to reduce or to avoid the limitation of Image2Punch.

I will suggest and give two recommendations as to how avoiding software crash whenever a user want to generate a very large perforated pattern.

1. Use a smaller image size as the source of Image2Punch. Image2Punch does not need a very high resolution image as its input. This is simply that the pattern result generated by Image2punch is a reflection of the original image in a very low resolution. For example, if you generate a square pattern that contain 500000 holes from 1000 holes in row and 500 holes in width, you only need an image with the size of 1000pixel X 500pixel. If you use the input with much larger file size, it will not generate any better result.

2. If you really need a larger image size to generate a very large perforated pattern, I recommend to split the image into few parts by using a proper image slicing. After split the image, you need to generate the pattern one by one. Then after that you need to joint the whole segment pattern into one perforated pattern for further process.

Run As Administrator Mode

The other issue some users have is that they cannot run Image2Punch software with Windows 7 and above. This is simple because Image2Punch need to be run in "**Run As Administrator**" mode. To do this, a user need to right click the Image2Punch Icon, then select "Run As Administrator" as in the Figure 1. If the user need to continue to run it as administrator, he or she need to click the property and select the compatibility tab. Then check the "Run this program as an administrator as illustrated in the Figure 2.

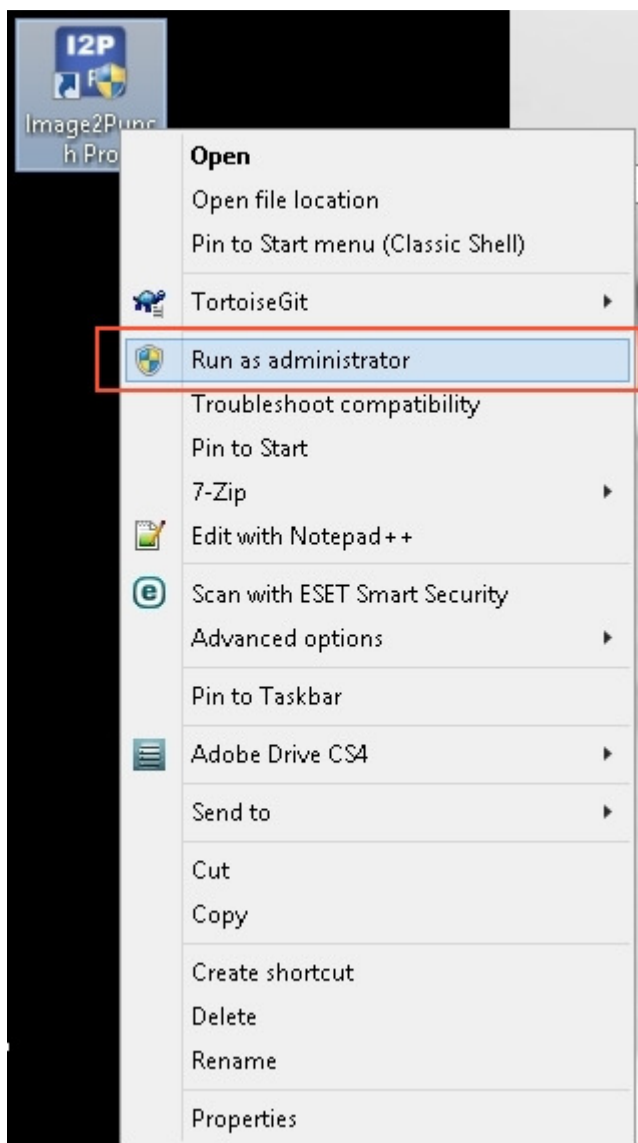


Figure 1

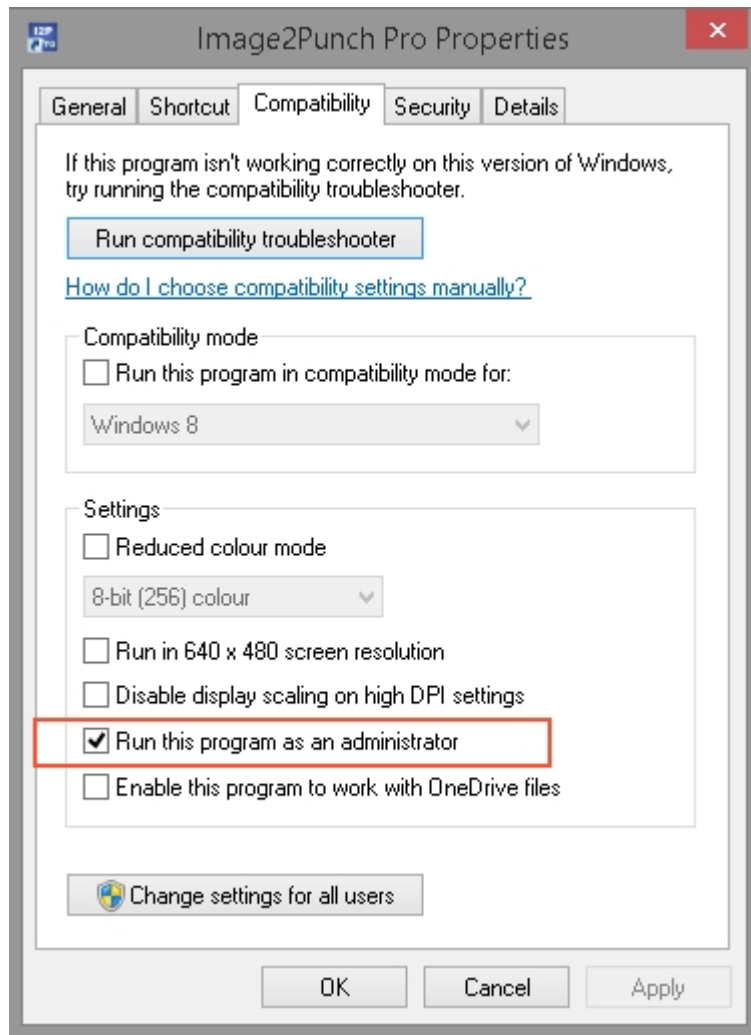


Figure 2

New feature in Image2Punch 6.0.0

A significant amount of time has been allocated during the preparation for the development of Image2Punch Pro 6.0.0. In this version, I have improved the performance in generating non-uniform pattern such as random pattern and also include some of useful feature that I believe will help the user in using Image2Punch Pro to be become more productive and efficient. The list below is for the new feature added in version 6.0.0.

- **Sorting Tool Database Library:** In Image2Punch version 6.0.0 and above, new feature that can sort the tooling based on particular dimension is introduced. By adding this feature, the user can easily organize the tooling database into their system. To sort the tool in particular group, user need to click the header on particular dimension as highlighted in the illustration below.
- **Saving Statistic Report :** This feature is to save the report in few file format. This functionality will enable user to record and save their pattern project information. The current file format is HTML, PDF and text file. To save the report, the user needs to click Save pattern report in the File Menu. Then type the filename and select the file format.

- **Seeding Type for Circular Pattern:** In this feature, a user can determine the seeding from 3 to 9 holes. The default seeding will be 6.
- **Stippling Pattern 1 (Force repulsion):** This pattern is actually a random pattern 3, but I have modified by using the principle of magnet repulsion and attraction. However, the calculation for the hole placement will be determined by the intensity of particular area in the image. The pattern result produced by this pattern is not only depend on the parameter that has been chosen, but also depend on the image itself. The recommendation image that I suggest is the one that has a strong colour separation between the area such as silhouette image. Please see the instruction manual as soon as you install the software for more information for this new pattern.
- **Stippling Pattern 2 (Voronoi Iteration):** This stippling pattern is based on voronoi iteration to reposition the original point location. The method in generating pattern has a similar principle with the Pattern Stippling 1. However, the algorithm calculation will be based on voronoi cell to calculate the intensity/brightness of the image. The pattern result produced by this pattern is not only depend on the parameter that has been chosen, but also depend on the image itself. Please see the instruction manual as soon as you install the software for more information for this new pattern.
- **Internal coding modification for memory management:** In this version, some internal modification had been done to improved memory management and simplify the CAD framework. There are also some minor coding mistakes that had been fixed.

More information regarding the new feature can be found at <http://www.image2punch.com/content/new-features-image2punch-pro-version-6xx>